



Copyright (c) 2017 nexgentec by Genesis Technologies AG Switzerland, all rights reserved

nexgentec ArtNet DMX Dimmer driver (NGTSLC4ZARTNETLD)

1. Disclaimer

- Genesis Technologies does provide this driver as it is. There is no commitment to support, nor does Genesis Technologies assure a decent reaction time in case of a problem. Genesis Technologies can refuse all support, discontinue support, end the driver lifetime at any time. Genesis Technologies will not refund in any case licenses
- Notwithstanding the foregoing, Genesis Technologies is not liable to licensee for any damages, including compensatory, special, incidental, exemplary, punitive, or consequential damages, connected with or resulting from this license agreement or licensee's use of this software. Licensee's jurisdiction may not allow such a limitation of damages, so this limitation may not apply.

By using this driver you accept that you have read and accepted the terms above!

2. What is the nexgentec ArtNet DMX Dimmer driver? What is it used for?

This driver is designed to work with the *nexgentec ArtNet Network* (NGTSLC4ZARTNETNW) in version 5.

It does add a dimmer to the Control4 project.

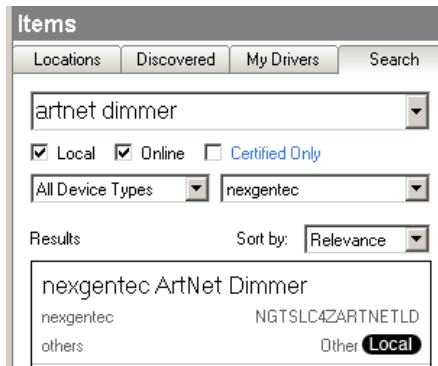
3. What features does the nexgentec ArtNet DMX Dimmer driver support?

All features of the *Light V2* drivers are supported, including *Advanced Light Scenes*

4. Software installation Control4 (new installation)

Assuming that you have already downloaded the drivers and placed them in %USERPROFILE%\Control4\Drivers.

- 4.1.** Start Composer, go to *System Design* and select the tab *Search* in the right top window. Search for *ArtNet Dimmer*



- 4.2.** Drag and drop the *ArtNet Dimmer* driver into the wished room. Click on it and find the Properties page. (Hovering with the mouse over the Properties will show up hints)






4.3. Properties

- -> Info: Does show the driver health info. If no version and *running* is not shown the driver will not work and the line will show the issue to be solved
- Driver name: The product identification of the driver
- Address: For a single light insert the number of the ArtNet channel that should be controlled.
 - For multiple channels use the separation by comma: 1,2,3
 - If multiple channels in a sequence should be controlled the format with a dash can be used: 2-9 will control channel 2, 3, 4, 5, 6, 7, 8, 9.
 - For special use is the format: 1-30s3. It means the range from 1 until 30 in series of 3. This example will result in the control of channel 1, 4, 7, 10, 13, 16, 19, 22, 25, 28.
 - Also combinations of all formats are allowed: 1,2,3,103-113,480-512s3
- Sending net/subnet/port on node: Select using which ArtNet processor/node the dimmer should send.
- Refresh light level: Select if the light level on Navigators should be refreshed.
- On unequal values: Select what level to display if the feedback from network driver contains unequal values
- Min on: Range is 1-255 (works like the min/max levels on standard C4 dimmers).
- Max on: Range is 1-255 (works like the min/max levels on standard C4 dimmers).
- Apply to... All settings (address excluded) can be sent to other dimmer driver(s)
- -> Log / Lua window: Selects the log level printed out in Lua window from Composer. Use the level *Debug* to see what the driver does
- -> Log / Online log server: If a persistent problem appears that cannot be solved from the installer support may ask you to activate a decent level. Do not use until support ask you to do so
- Log period (h): The time frame the log should output
- Log auth: Developer can give you a code to see more logs. Usually not really interesting, only for in deep debug

4.4. Connections

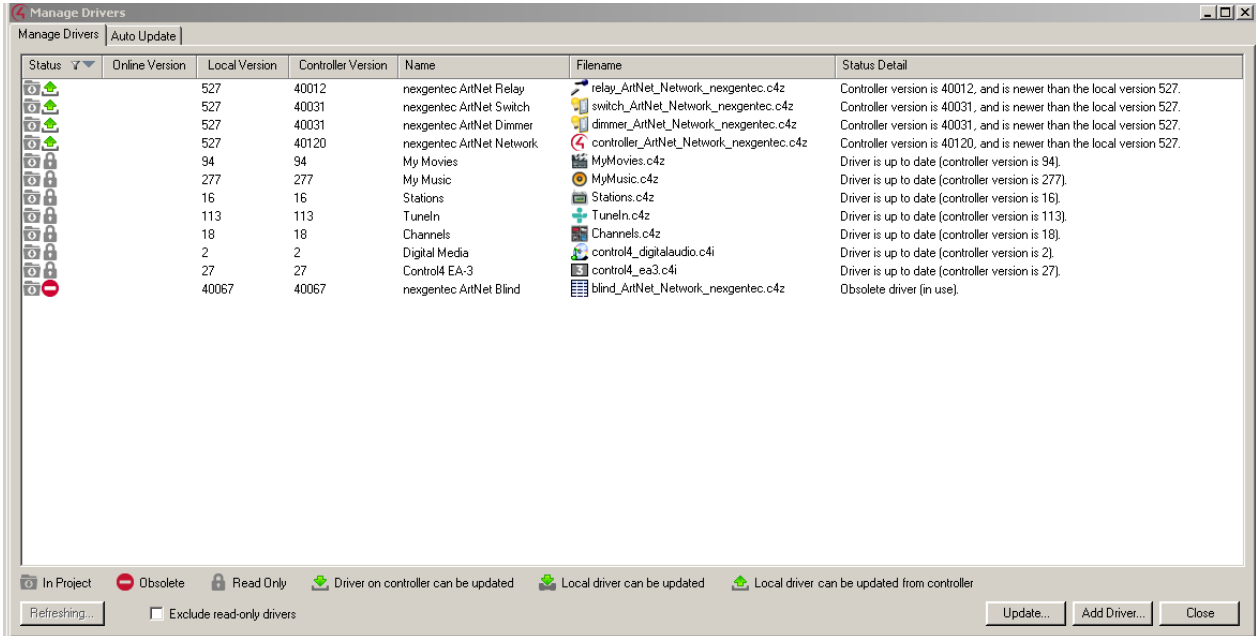
If the *nexgentec ArtNet Network* was installed before the dimmer driver, the connections for the ArtNet Network should be done automatically. The button connections connect to keypads etc.

The relay connection can be used to completely switch off the light. It goes to low if light level is < 1 and to high if > 1

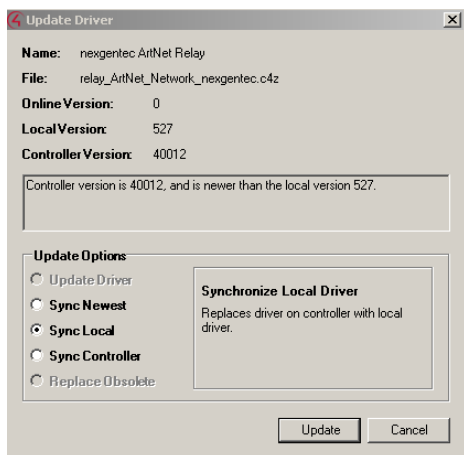
Cinewall White				
Name	Type	Connection	Input/Output	Connected To
Control Inputs				
 ArtNet Network	Control	ARTNET_NETWORK	Input	nexgentec ArtNet Network->ArtNet Network
 Power Relay	Control	RELAY	Input	
Control Outputs				
 Top Button Link	Control	BUTTON_LINK	Output	
 Bottom Button Link	Control	BUTTON_LINK	Output	
 Toggle Button Link	Control	BUTTON_LINK	Output	

5. Upgrading from version 4

With version 5 the nexgentec ArtNet drivers will be converted to the new version numbering all newer nexgentec/genesis-technologies driver have. Therefore to upgrade add the driver into your drivers folder %USERPROFILE%\Control4\Drivers and open in Composer *Driver -> Manage drivers*.



Highlight each line of the ArtNet drivers and select *Update*. Select then to *Sync Local*



Only the property *Address* will be overtaken from version 4. All other properties may be set again (taking advance of the *Apply to..* feature can save time!). And the only new property that has to be set in this driver is *Sending net/subnet/port on node*

6. Device variables

Similar to all Control4 dimmer drivers.

7. Programming actions/ commands

Similar to all Control4 dimmer drivers.

8. Programming Device specific commands

- Refresh light level: The property *Refresh light level* can be overwritten to disable the Navigator refreshes temporarily
- Ramp to level over minutes: Useful if you have a long ramp
- Ramp to level over hours: If you have a very long ramp

9. Known issues

See the manual for the *nexgentec ArtNet Network* driver for further information about issues that are known.

10. Updates / Support

Updates are available on: <<[<https://technet.genesis-technologies.ch>>](https://technet.genesis-technologies.ch)>

Bugs should be reported to: info@genesis-technologies.ch