



Copyright (c) 2017 nexgentec by Genesis Technologies AG Switzerland, all rights reserved

nexgentec ArtNet DMX Relay driver (NGTSLC4ZARTNETRL)

1. Disclaimer

- Genesis Technologies does provide this driver as it is. There is no commitment to support, nor does Genesis Technologies assure a decent reaction time in case of a problem. Genesis Technologies can refuse all support, discontinue support, end the driver lifetime at any time. Genesis Technologies will not refund in any case licenses
- Notwithstanding the foregoing, Genesis Technologies is not liable to licensee for any damages, including compensatory, special, incidental, exemplary, punitive, or consequential damages, connected with or resulting from this license agreement or licensee's use of this software. Licensee's jurisdiction may not allow such a limitation of damages, so this limitation may not apply.

By using this driver you accept that you have read and accepted the terms above!

2. What is the nexgentec ArtNet DMX Relay driver? What is it used for?

This driver is designed to work with the *nexgentec ArtNet Network* (NGTSLC4ZARTNETNW) version 5.
It does add a relay to the Control4 project.

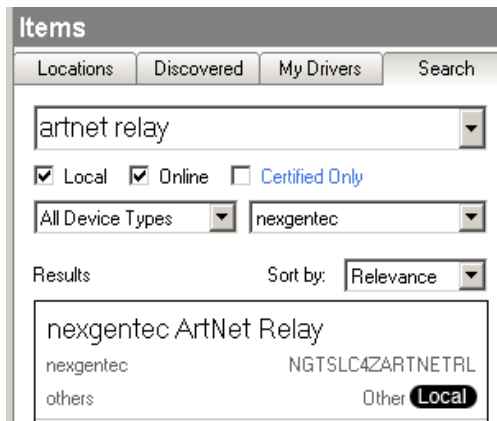
3. What features does the nexgentec ArtNet DMX Relay driver support?

All features of a standard relay driver are supported

4. Software installation Control4 (new installation)

Assuming that you have already downloaded the drivers and placed them in %USERPROFILE%\Control4\Drivers.

- 4.1.** Start Composer, go to *System Design* and select the tab *Search* in the right top window. Search for *ArtNet Relay*



4.2. Drag and drop the *ArtNet Relay* driver into the wished room. Click on it and find the Properties page. (Hovering with the mouse over the Properties will show up hintss

4.3. Properties

- -> Info: Does show the driver health info. If no version and *running* is not shown the driver will not work
- Driver name: The product identification of the driver
- Address: For a single light insert the number of the ArtNet channel that should be controlled.
 - For multiple channels use the separation by comma: 1,2,3
 - If multiple channels in a sequence should be controlled the format with a dash can be used: 2-9 will control channel 2, 3, 4, 5, 6, 7, 8, 9.
 - For special use is the format: 1-30s3. It means the range from 1 until 30 in series of 3. This example will result in the control of channel 1, 4, 7, 10, 13, 16, 19, 22, 25, 28.
 - Also combinations of all formats are allowed: 1,2,3,103-113,480-512s3
- Sending net/subnet/port on node: Select over which ArtNet node the dimmer should send.
- On unequal values: Select what level to display if the feedback from network driver contains unequal values
- -> Log / Lua window: Selects the log level printed out in Lua window from Composer. Use the level *Debug* to see what the driver does
- -> Log / Online log server: If a persistent problem appears that cannot be solved from the installer support may ask you to activate a decent level. Do not use until support ask you to do so
- Log period (h): The time frame the log should output
- Log auth: Developer can give you a code to see more logs. Usually not really interesting, only for in deep debug

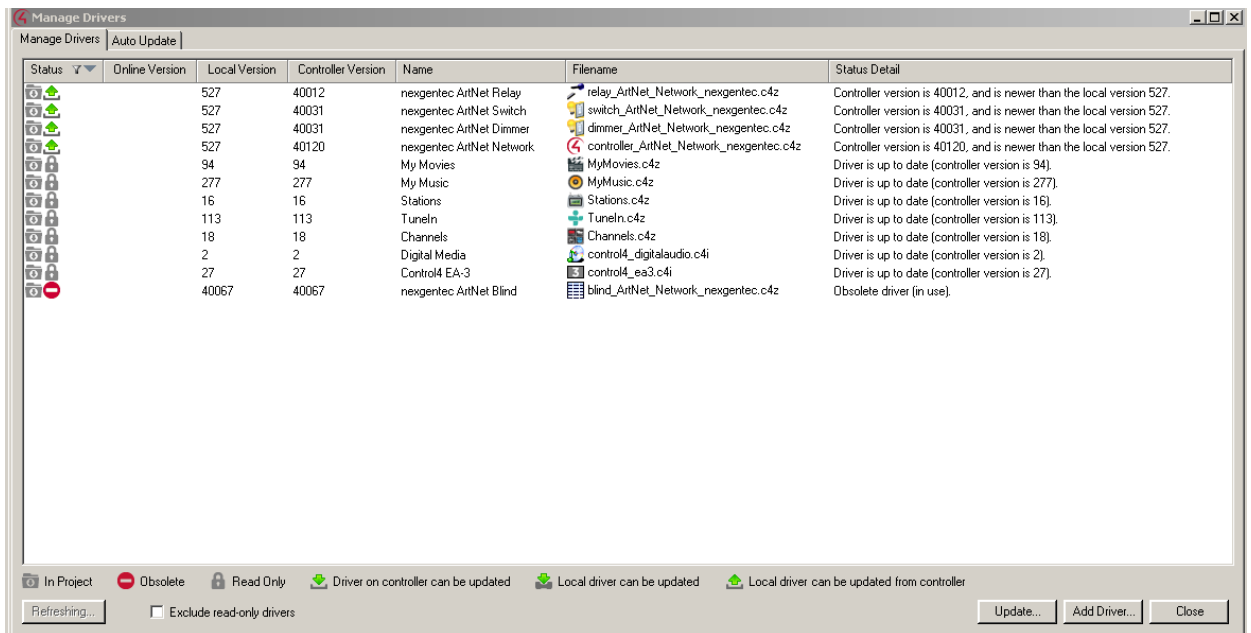
4.4. Connections

If the *nextgentec ArtNet Network* was installed before the Relay driver, the connections for the ArtNet Network should be done automatically. The relay connection is to connect to standard relays, gates, pumps, blinds etc.

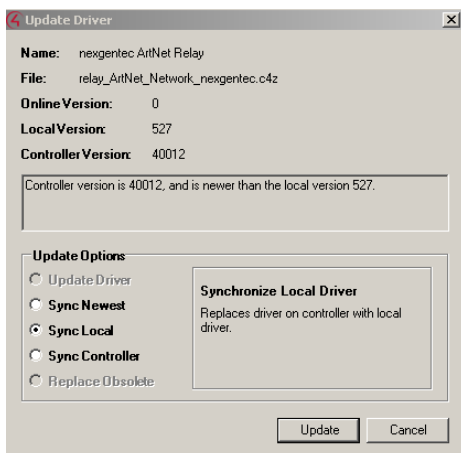
Name	Type	Connection	Input/Ou...	Connected To
Control Inputs				
ArtNet Network	Control	ARTNET_NETW...	Input	nexgentec ArtNet Network->ArtNet Network
Control Outputs				
Relay	Control	RELAY	Output	

5. Upgrading from version 4

With version 5 the nexgentec ArtNet drivers will be converted to the new version numbering all newer nexgentec/genesis technologies driver have. Therefore to upgrade add the driver into your drivers folder %USERPROFILE%\Control4\Drivers and open in Composer *Driver -> Manage drivers*.



Highlight each line of the ArtNet drivers and select *Update*. Select then to *Sync Local*



Only the property *Address* will be overtaken from version 4. All other properties may

be set again (taking advance of the *Apply to..* feature can save time!). And the only new property that has to be set in this driver is *Sending net/subnet/port on node*

6. Device variables

None

7. Programming Events

Close and open the relay without having a relay connected

8. Driver actions

Close and open the relay without having a relay connected

9. Known issues

See the manual for the *nexgentec ArtNet Network* driver for further information about issues that are known.

10. Updates / Support

Updates are available on: <<<https://technet.genesis-technologies.ch>>>

Bugs should be reported to: info@genesis-technologies.ch